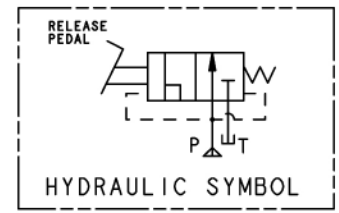
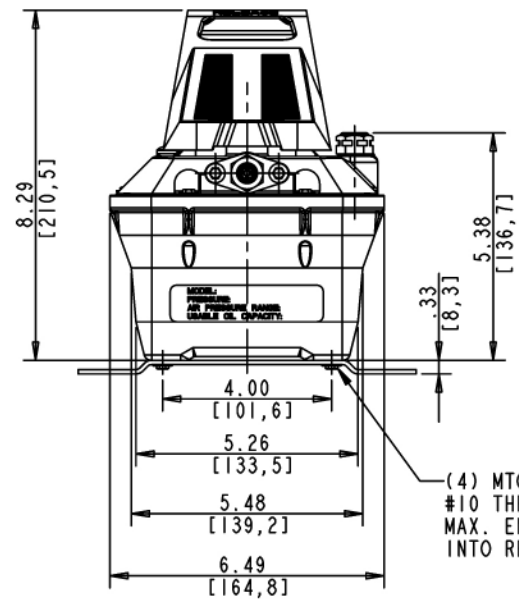
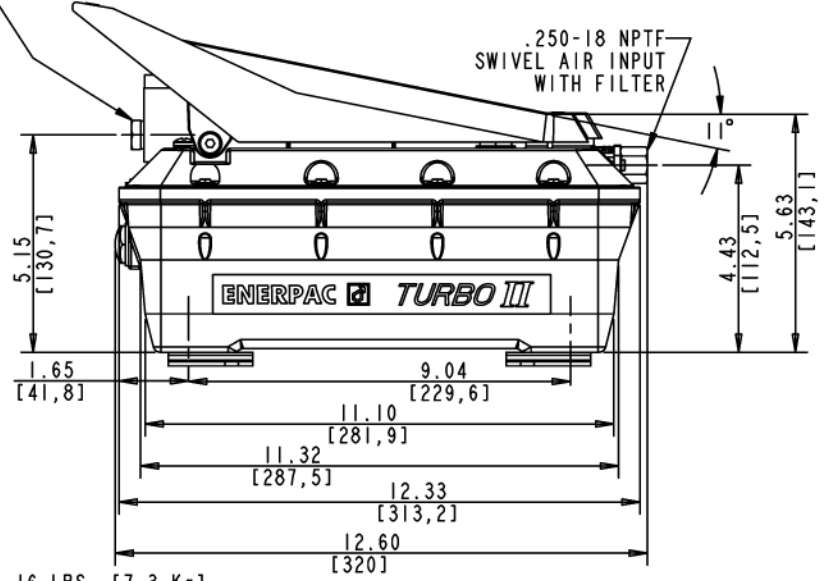


FOR MODELS PATG1102N / PATG1102NB = .375-18 NPTF HYDRAULIC OUTLET  
FOR MODELS PATG1102P / PATG1102PB = G .250-19 BSPP HYDRAULIC OUTLET



(4) MTG. HOLES FOR #10 THREAD FORMING SCREW  
MAX. ENGAGEMENT LENGTH INTO RESERVOIR - .75 IN. [19,1MM]

WEIGHT: 16 LBS. [7,3 Kg]  
WEIGHT WITH MOUNTING BRACKET: 17 LBS. [7,7 Kg]  
USABLE OIL CAPACITY: 127 CU. IN. [2,1L]  
RESERVOIR CAPACITY: 150 CU. IN. [2,5L]  
RELIEF VALVE SETTING: 10,400-10,900 PSI [717,24-751,72 BAR] (71.72-75.12 MPa)  
AIR CONSUMPTION: 12 SCFM [340 L/MIN.] @ 75 PSI [5,2 BAR] (0.52 MPa)  
AIR PRESSURE OPERATING RANGE: 25-125 PSI [1,72-8,62 BAR] (0.17-0.86 MPa)  
SOUND LEVEL: TYPICAL 76 DBA

ECO CHANGES	DATE	DIMENSIONS IN BRACKETS ARE IN [mm]		<b>ENERPAC</b>	DESCRIPTION <b>TURBO III 2 LT.</b>	DRAWING NO. ID10618	1/97
	01/2015	Specification Sheet					
	4-9-01/PLS	Pro/E CONTROLLED DRAWING					
MODEL NO.	DR. PLS	DATE	2-09-01				
10,000 PSI PATG SERIES	CH. DAL	DATE	2-14-01				C