

RP-SERIES

PORTABLE BATTERY DRIVEN RAIL STRESSING SYSTEM

HYDRAULIC RAIL STRESSOR WITH ZERO EMISSION POWER PACK
FOR HEAVY RAILROAD TRACKS STRESSING, THERMITE JOINT WELDING AND REDRESSING



Available from:
WORLIFTS
rail@worlifts.co.uk
www.worlifts.co.uk
0121 460 1113

ENERPAC 

▼ RP70A, Hydraulic Rail Stressor



Hydraulic Rail Stressor

- Modular Stressor can be transported with single man lift
- Easy to assemble & easy to transport in storage frame
- The RP70A is a modular kit stored in a specially designed steel cage (optional) with a framed section for each component
- Used in obstructionless or over the rail applications for stressing rail
- Holds the rail in neutral length during the welding process
- Ample clearance for all weld equipment, hydraulic weld shears, and rail grinders
- Compact, lightweight pin/clevis design for easy transport and setup in remote applications
- Swing arm clamps the bracket and eliminates the need for separate jaws and wedges

ZC3-Series, Battery Powered Stressing Pumps

- Zero emission hydraulic power pack
- Advanced brushless motor and Lithium-ion battery
- Steel manual operating valve with pressure hold function
- Safety key to safely leave the pump unattended during breaks
- Pressure release valve V182 included
- **NetworkRail** Certificate of Acceptance PA05-06958.



Lightweight & Modular Rail Stressing System



RP70A Rail Stressor

The Enerpac RP70A is a lightweight rail stressing kit for railway maintenance crews who assemble and install the rail puller directly on site.

The durable, easy-to-assemble components, stored and protected in a specially designed steel cage during transport, are up to 3 times lighter than similar tools.

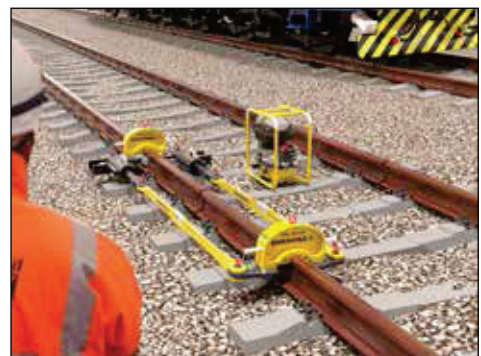
The less physically demanding Enerpac RP70a is compatible with the cordless Enerpac ZC pump for a complete clean energy solution.



Durability

Double-acting aluminum cylinders are enclosed within steel sleeves protecting the cylinder rods from damage, particularly weld splatter and extends the life of the unit.

▼ RP70A Rail Stressor in an obstructionless pull.



Hydraulic Rail Stressor

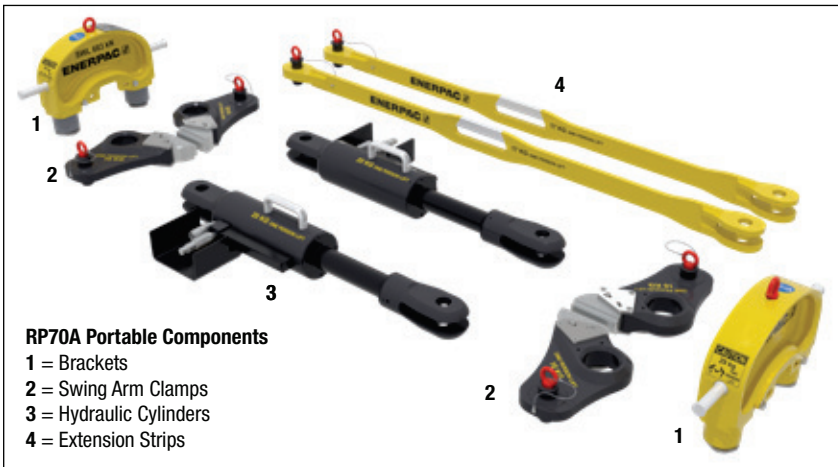


RP70A Rail Stressor

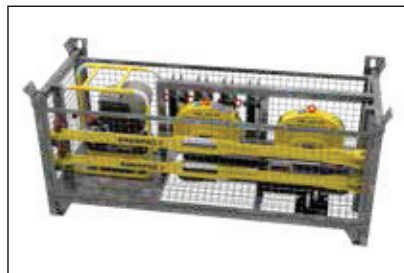
The RP70A Hydraulic Rail Stressor is used to pull together heavy railroad tracks for stressing, thermite joint welding and redressing.

In the rail industry ergonomic managers specify that tools over 29 kg should be modular and be able to be manually assembled/transported on site.

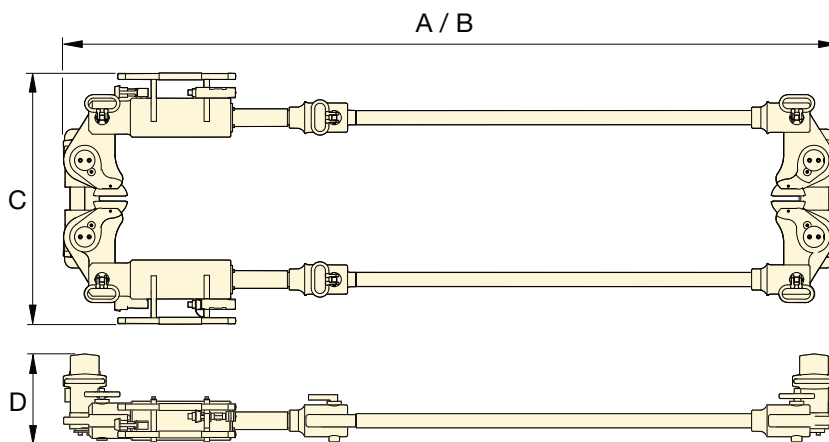
The RP70A comes as a complete solution including a battery powered pump (Most competitors use Diesel pumps) with an optional transportation and storage frame for easy mobilisation/demobilisation. The RP70A adjusts the gap between rail ends for rail stressing, rail welding, repairing rail failures and servicing insulators.



▲ Obstructionless or over the rail applications.



▲ Optional frame for safe transport and storage (contact Enerpac for details).



Capacity ton (kN)		Stroke (mm)	Model Number	Dimensions (mm)				(kg)
Pull	Push			A	B	C	D	
70 (623)	35 (311)	203	RP70A	2789	2972	899	325	248

A = Closed length. B = Extended length

RP Series



Rated Pulling/Pushing Capacity:

70 / 35 ton

Stroke:

203 mm

Maximum Operating Pressure:

580 bar



Hydraulic Hoses

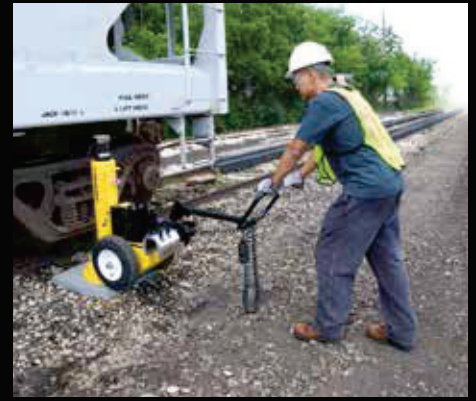
Use H700-Series thermo-plastic safety hoses to ensure the integrity of your system, specify only Enerpac hydraulic hoses.



Battery Powered Stressing Pumps

- Cordless, zero emission pump
- 82V 4Ah Lithium-ion battery
- Roll cage and pressure gauge
- 3-stage: 0,52 l/min at 580 bar
- 4,0 litres useable oil capacity
- Pump weight 34,8 kg (excluding battery)
- Reduced Noise Level 80 dBA max
- Advanced brushless 1,5 kW motor.

Model Number	Battery Charger (Volts)	Maximum Pressure (bar)
ZC3404JE-RS	230	700
ZC3404JB-RS	115	700



RAIL EQUIPMENT

THE RIGHT TOOL MAKES ALL THE DIFFERENCE

Enerpac tools are put to work under the most intense and demanding conditions. That's why we never compromise! So you can rely on quality and precision every time, giving you the safest and most efficient path to increase productivity.

As a global market leader in high-pressure hydraulic tools, controlled force products and solutions for the precision positioning of heavy loads, Enerpac products have moved some of the largest structures on earth. They are the industry standard in aerospace, infrastructure, manufacturing, mining, oil & gas, power generation and much more.

Elite tools. For Elite Professionals.



Mechanical Track Jacks



Hydraulic Rail Pulers & Stressors



POW'R-RISER Mobile Lifting Jacks



Hydraulic Nut Splitters



Cordless Hydraulic Pumps



POW'R-LOCK Mobile Lift System

ENERPAC 

WORLIFTS

www.enerpac.com