



//TANGYE//

**HYDRAULIC
JACKS &
PUMPS**

TANGYE HYDRAULIC JACKS & PUMPS

For over 160 years Tangye has developed and manufactured a range of high quality hydraulic equipment ideal for industrial lifting as well as for a variety of other applications.

Tangye offers Hydraclaw, Hydramite and Hydralite hydraulic jacks as well as Hydrapak pumps, ideal when no power source is available, and Hydrostatic Test Pumps for checking the pressure resistance of gas and fluid pressure vessels.

Tangye's range of lightweight aluminium products has been in use throughout the world since 1856. Characterised by robust design, Tangye hydraulic jacks and pumps are high quality products that provide many years of reliable service.

Industrial Lifting

Tangye jacks allow heavy loads to be lifted, lowered, manoeuvred and positioned with safety. The range offers lifting capacity, 5-100 tonne, and stroke options to meet the needs of a variety of heavy lifting situations including claws for low ground clearance and screwed rams for sustained load retention. Due to their lightweight design and ease of use, Tangye's Hydralite, Hydraclaw, and Hydramite hydraulic jacks can be safely operated by one person.

Quality Assurance

All Tangye products are manufactured in the UK by Allspeeds Ltd using high quality European materials and in accordance with ISO 9001. Every Tangye jack and pump is serial numbered, fully tested and certified.



JACKS



4

HYDRACLAW
5 TONNE



5

HYDRAMITE
6.5-15 TONNE



6

HYDRALITE
20-100 TONNE

PUMPS



18

HYDRAPAK
110-1000 BAR



21

**HYDROSTATIC
TEST PUMP**
110-1000 BAR



23

**SPECIAL
ENGINEERED
PRODUCTS**

HYDRACLAW JACK



Tangye's only all steel jack, Hydraclaw's construction makes it ideal for mining engineers tackling heavy lifts with limited working space.

Powerful

5 tonne capacity on head or toe

High Lift

178 mm

Fast Operation

5.5 mm lift per stroke

Stable

Substantial base offers stability under load

Versatile

Horizontal or vertical operation

Safe

Positive stop feature prevents overstroking, pressure relief valve prevents overloading

Ease of Operation

Lifting / lowering controlled smoothly by operating lever, optimised lever effort

Low Clearance

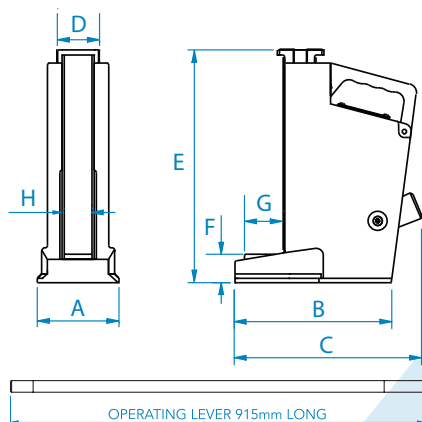
41 mm

Reliable

Jack hydraulics are totally enclosed

Robust Construction

Can withstand rough treatment, ferrous construction has led to its extensive use underground



| Product Code | 9501W |
|----------------------------|--------------------|
| Ram Capacity | 5 Tonne |
| Oil Capacity | 0.68 Litres |
| Weight of Jack | 18 kg |
| Weight of Lever | 3.63 kg |
| Working Pressure | 618 bar (8963 PSI) |
| Maximum Effort on Lever | 45 kg |
| Stroke - mm (ins) | 178 (7) |
| Lift per Stroke - mm (ins) | 5.5 (0.21) |
| Dimensions | mm (ins) |
| A - Width | 114 (4.5) |
| B - Centre Ram to Face | 220 (8.7) |
| C - Overall Length | 260 (10.2) |
| D - Ram Width | 57 (2.2) |
| E - Height | 325 (12.8) |
| F - Claw Height | 41 (1.6) |
| G - Claw Depth | 52 (2) |
| H - Closed Height | 38 (1.5) |
| Service Kit Number | 995125 |

HYDRAMITE JACKS

Tangye's Hydramite jacks are the ideal portable tool for lifting heavy loads.

Powerful

6.5 tonne, 10 tonne, 15 tonne capacity

Proven

Thousands in use all around the world

Well Engineered

Servicing and repair easily undertaken

Safe

Relief valve prevents overloading

Compact and Lightweight

Ideal portable tool

Versatile

Operates in any orientation, totally enclosed, suitable for use in dusty conditions

Ease of Operation

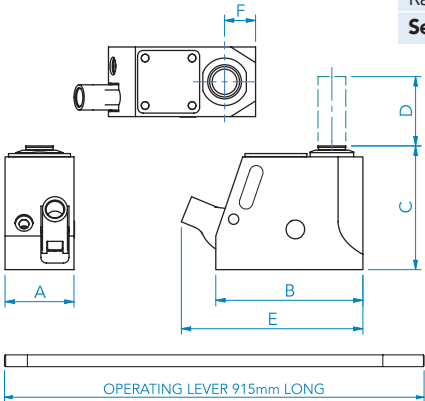
Lift / lowering controlled smoothly by operating lever

Three Interfaces

Available with Plane, Swivel or Ball interfaces



| Product Code | 8104H | 1 105 002 | 1 105 003 |
|------------------------|-------------|-------------|-------------|
| Capacity | 6.5 Tonne | 10 Tonne | 15 Tonne |
| Oil Capacity | 0.1 Litres | 0.13 Litres | 0.27 Litres |
| Weight | 3.6 kg | 6.3 kg | 10 kg |
| Dimensions | mm (ins) | mm (ins) | mm (ins) |
| A - Base Width | 76 (2.99) | 76 (2.99) | 92 (3.62) |
| B - Base Depth | 158 (6.22) | 171 (6.73) | 197 (7.75) |
| C - Closed Height | 140 (5.51) | 182 (7.17) | 230 (9.06) |
| D - Stroke | 75 (2.95) | 115 (4.5) | 152 (5.98) |
| E - Max Depth | 190 (7.48) | 207 (8.15) | 236 (9.29) |
| F - Centre Ram to Face | 33.3 (1.31) | 40 (1.57) | 48 (1.89) |
| Ram Diameter | 30 (1.18) | 38 (1.5) | 47.5 (1.87) |
| Service Kit Number | 995052 | 995053 | 995054 |



HYDRALITE RANGE

A range of lightweight jacks designed to lift, lower, manoeuvre and position heavy loads with maximum safety.

Portable

Extensive use of high strength aluminium alloys minimises jack weight for portability.

Reliable

Hydralite's long service life makes it the choice of many rental operations. All moving parts are totally enclosed and lubricated by the hydraulic oil. Seals are highly resistant to deterioration under widely varying climatic conditions.

Safe

Overload & Overstroke Protection

A high pressure relief valve prevents lifting of excessive loads, while locking overloads applied to the ram. A fail-safe positive stop mechanism prevents overstroking of the ram by venting oil to the reservoir when the stroke limit is reached.

Load Sustaining

When loads are to be sustained for significant time a screwed ram should be selected. Screwed rams do not rely on fluid pressure to hold the load.

Minimum Operator Effort

Full capacity is achievable with one operator. The short lever is lightweight and requires little space for operation.

Easy and Versatile Operation

Operator control is provided by the hexagon key in the operating lever. Most models have three lever positions offering the most suitable operating height. The jacks can be used vertically or horizontally due to the carefully positioned breather.

Low Clearance

Claw models are available for lifting loads with low ground clearance. Jacks with a claw must be fitted with an extended base and loads must not exceed the maximum specified as marked on the claw.

Wide Range

Capacities from 20 to 100 tonne with stroke options from 6" to 18" and choice of plain, claw or screwed rams.

Easy to Maintain

The jack design makes inspection and component replacement uncomplicated. Refer to service instructions for guidance.

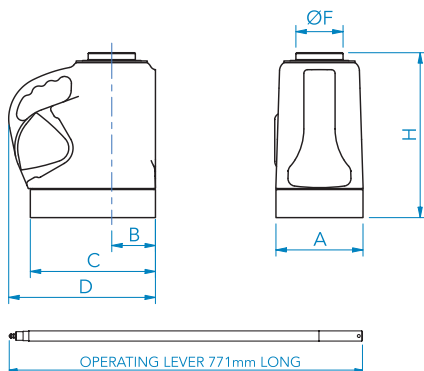
Ready to Use

The drawbacks associated with using pumps and cylinders do not apply. Hydralite jacks are immediately ready for use.



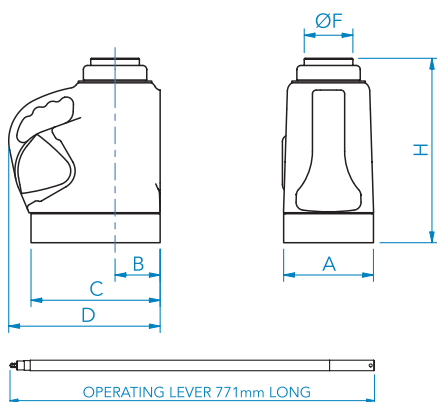
| | | Plain | | | Claw/Toe | | | Screwed | | | Extended Base | | |
|--------------------|-----|--------|--------|--------|----------|---------|---------|---------|---------|---------|---------------|-----|-----|
| Stroke (Inches) | | 6 | 12 | 18 | 6 | 12 | 18 | 6 | 12 | 18 | 6 | 12 | 18 |
| Stroke (mm) | | 152 | 305 | 457 | 152 | 305 | 457 | 152 | 305 | 457 | 152 | 305 | 457 |
| Load (Tonnes) | 20 | PS620 | PS1220 | | PS620C | PS1220C | | PS620S | PS1220S | | PS620C1 | | |
| | 30 | PS630 | PS1230 | | PS630C | PS1230C | | PS630S | PS1230S | | PS630C1 | | |
| | 40 | | | PS1840 | | | PS1840C | | | PS1840S | | | |
| | 60 | PS660 | PS1260 | | PS660C | PS1260C | | PS660S | PS1260S | | PS660C1 | | |
| | 72 | PS672Z | | | | | | | | | | | |
| Claw Load (Tonnes) | 100 | P6100 | | | | | | P6100S | | | | | |
| | 8 | | | | PS620C | PS1220C | | | | | | | |
| | 12 | | | | PS630C | PS1230C | | | | | | | |
| | 16 | | | | | | PS1840C | | | | | | |
| | 24 | | | | PS660C | PS1260C | | | | | | | |

6" PLAIN HYDRALITE



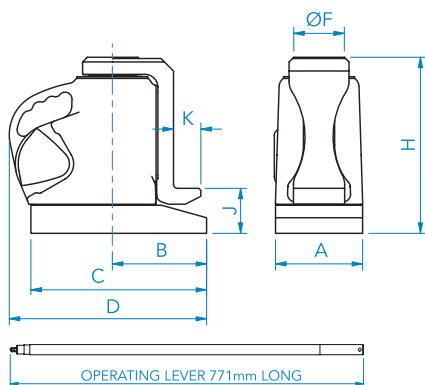
| Product Code | PS620 | PS630 | PS660 |
|----------------------------|---------------------|---------------------|---------------------|
| Ram Capacity | 20 Tonne | 30 Tonne | 60 Tonne |
| Oil Capacity | 0.64 Litres | 0.88 Litres | 1.71 Litres |
| Stroke - mm (ins) | 152 (6) | 152 (6) | 152 (6) |
| Lift per Stroke - mm (ins) | 1.1 (0.042) | 0.7 (0.026) | 0.3 (0.013) |
| Weight | 10.9 kg | 15.4 kg | 27.4 kg |
| Working Pressure | 682 bar (9,900 PSI) | 644 bar (9,350 PSI) | 644 bar (9,350 PSI) |
| Maximum Effort on Lever | 54 kg | 52 kg | 52 kg |
| Dimensions | mm (ins) | mm (ins) | mm (ins) |
| A - Width | 121 (4.75) | 140 (5.5) | 190 (7.5) |
| B - Centre Ram to Face | 60 (2.38) | 70 (2.75) | 92 (3.625) |
| C - Base Length | 178 (7) | 197 (7.75) | 251 (9.875) |
| D - Overall Depth | 214 (8.44) | 235 (9.25) | 286 (11.25) |
| F - Ram Diameter | 60 (2.38) | 76 (3) | 108 (4.25) |
| H - Closed Height | 263 (10.35) | 263 (10.35) | 293 (11.562) |
| Service Kit Number | 133506 | 133511 | 133518 |

6" SCREWED HYDRALITE



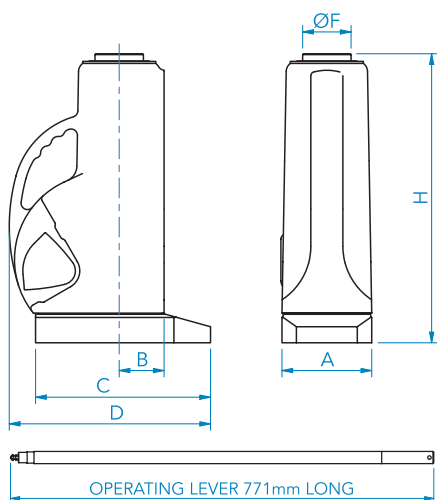
| Product Code | PS620S | PS630S | PS660S |
|----------------------------|---------------------|---------------------|---------------------|
| Ram Capacity | 20 Tonne | 30 Tonne | 60 Tonne |
| Oil Capacity | 0.64 Litres | 0.88 Litres | 1.71 Litres |
| Stroke - mm (ins) | 152 (6) | 152 (6) | 152 (6) |
| Lift per Stroke - mm (ins) | 1.1 (0.042) | 0.7 (0.026) | 0.3 (0.013) |
| Weight | 10.9 kg | 15.4 kg | 27.4 kg |
| Working Pressure | 682 bar (9,900 PSI) | 644 bar (9,350 PSI) | 644 bar (9,350 PSI) |
| Maximum Effort on Lever | 54 kg | 52 kg | 52 kg |
| Dimensions | mm (ins) | mm (ins) | mm (ins) |
| A - Width | 121 (4.75) | 140 (5.5) | 190 (7.5) |
| B - Centre Ram to Face | 60 (2.38) | 70 (2.75) | 92 (3.625) |
| C - Base Length | 178 (7) | 197 (7.75) | 251 (9.875) |
| D - Overall Depth | 214 (8.44) | 235 (9.25) | 286 (11.25) |
| F - Ram Diameter | 60 (2.38) | 76 (3) | 108 (4.25) |
| H - Closed Height | 263 (10.35) | 263 (10.35) | 293 (11.562) |
| Service Kit Number | 133930 | 133932 | 133935 |

6" CLAW / TOE HYDRALITE



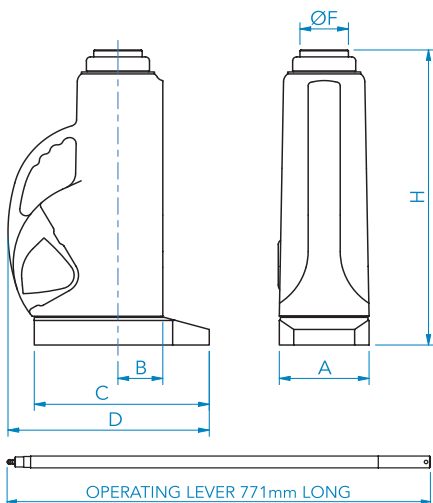
| Product Code | PS620C | PS630C | PS660C |
|----------------------------|---------------------|---------------------|---------------------|
| Ram Capacity | 20 Tonne | 30 Tonne | 60 Tonne |
| Claw Capacity | 8 Tonne | 12 Tonne | 24 Tonne |
| Oil Capacity | 0.64 Litres | 0.88 Litres | 1.71 Litres |
| Stroke - mm (ins) | 152 (6) | 152 (6) | 152 (6) |
| Lift per Stroke - mm (ins) | 1.1 (0.042) | 0.7 (0.026) | 0.3 (0.013) |
| Weight of Jack | 10.9 kg | 15.4 kg | 27.4 kg |
| Weight of Claw | 3.6 kg | 4.9 kg | 15.7 kg |
| Working Pressure | 682 bar (9,900 PSI) | 644 bar (9,350 PSI) | 644 bar (9,350 PSI) |
| Maximum Effort on Lever | 54 kg | 52 kg | 52 kg |
| Dimensions | mm (ins) | mm (ins) | mm (ins) |
| A - Width | 121 (4.75) | 140 (5.5) | 190 (7.5) |
| B - Centre Ram to Face | 60 (2.38) | 70 (2.75) | 92 (3.625) |
| C - Base Length | 178 (7) | 197 (7.75) | 251 (9.875) |
| D - Overall Depth | 214 (8.44) | 235 (9.25) | 286 (11.25) |
| F - Ram Diameter | 60 (2.38) | 76 (3) | 108 (4.25) |
| H - Closed Height | 263 (10.35) | 263 (10.35) | 293 (11.562) |
| J - Base to Claw | 67 (2.63) | 73 (2.875) | 73 (2.875) |
| K - Claw Depth | 41 (1.61) | 45 (1.77) | 48 (1.89) |
| Service Kit Number | 133506 | 133511 | 133518 |

12" PLAIN HYDRALITE



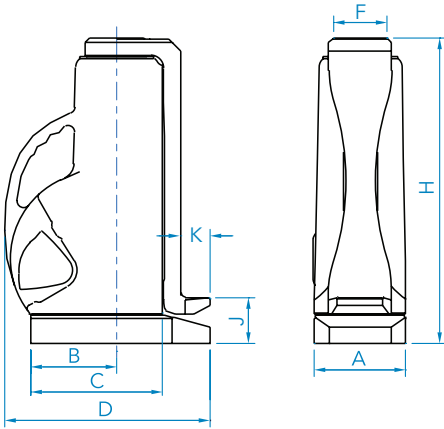
| Product Code | PS1220 | PS1230 | PS1260 |
|----------------------------|---------------------|---------------------|---------------------|
| Ram Capacity | 20 Tonne | 30 Tonne | 60 Tonne |
| Oil Capacity | 1.14 Litres | 1.71 Litres | 2.84 Litres |
| Stroke - mm (ins) | 305 (12) | 305 (12) | 305 (12) |
| Lift per Stroke - mm (ins) | 1.1 (0.042) | 0.7 (0.026) | 0.3 (0.013) |
| Weight | 16.7 kg | 23.4 kg | 43.7 kg |
| Working Pressure | 682 bar (9,900 PSI) | 644 bar (9,350 PSI) | 644 bar (9,350 PSI) |
| Maximum Effort on Lever | 54 kg | 52 kg | 52 kg |
| Dimensions | mm (ins) | mm (ins) | mm (ins) |
| A - Width | 121 (4.75) | 140 (5.5) | 190 (7.5) |
| B - Centre Ram to Face | 60 (2.38) | 70 (2.75) | 92 (3.625) |
| C - Base Length | 246 (9.69) | 273 (10.75) | 339 (13.375) |
| D - Overall Depth | 289 (11.38) | 311 (12.25) | 384 (15.375) |
| F - Ram Diameter | 60 (2.38) | 76 (3) | 108 (4.25) |
| H - Closed Height | 438 (17.25) | 451 (17.75) | 500 (19.687) |
| Service Kit Number | 133506 | 133511 | 133518 |

12" SCREWED HYDRALITE



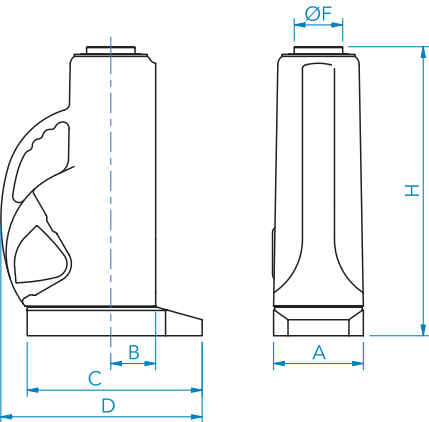
| Product Code | PS1220S | PS1230S | PS1260S |
|----------------------------|---------------------|---------------------|---------------------|
| Ram Capacity | 20 Tonne | 30 Tonne | 60 Tonne |
| Oil Capacity | 1.14 Litres | 1.71 Litres | 2.84 Litres |
| Stroke - mm (ins) | 305 (12) | 305 (12) | 305 (12) |
| Lift per Stroke - mm (ins) | 1.1 (0.042) | 0.7 (0.026) | 0.3 (0.013) |
| Weight | 16.7 kg | 23.4 kg | 43.7 kg |
| Working Pressure | 682 bar (9,900 PSI) | 644 bar (9,350 PSI) | 644 bar (9,350 PSI) |
| Maximum Effort on Lever | 54 kg | 52 kg | 52 kg |
| Dimensions | mm (ins) | mm (ins) | mm (ins) |
| A - Width | 121 (4.75) | 140 (5.5) | 190 (7.5) |
| B - Centre Ram to Face | 60 (2.38) | 70 (2.75) | 92 (3.625) |
| C - Base Length | 246 (9.69) | 273 (10.75) | 339 (13.375) |
| D - Overall Depth | 289 (11.38) | 311 (12.25) | 384 (15.375) |
| F - Ram Diameter | 60 (2.38) | 76 (3) | 108 (4.25) |
| H - Closed Height | 438 (17.25) | 451 (17.75) | 500 (19.687) |
| Service Kit Number | 133930 | 133932 | 133935 |

12" CLAW / TOE HYDRALITE



| Product Code | PS1220C | PS1230C | PS1260C |
|----------------------------|---------------------|---------------------|---------------------|
| Ram Capacity | 20 Tonne | 30 Tonne | 60 Tonne |
| Claw Capacity | 8 Tonne | 12 Tonne | 24 Tonne |
| Oil Capacity | 1.14 Litres | 1.71 Litres | 2.84 Litres |
| Stroke - mm (ins) | 305 (12) | 305 (12) | 305 (12) |
| Lift per Stroke - mm (ins) | 1.1 (0.042) | 0.7 (0.026) | 0.3 (0.013) |
| Weight of Jack | 16.7 kg | 23.4 kg | 43.7 kg |
| Weight of Claw | 5.5 kg | 7.6 kg | 21.2 kg |
| Working Pressure | 682 bar (9,900 PSI) | 644 bar (9,350 PSI) | 644 bar (9,350 PSI) |
| Maximum Effort on Lever | 54 kg | 52 kg | 52 kg |
| Dimensions | mm (ins) | mm (ins) | mm (ins) |
| A - Width | 121 (4.75) | 140 (5.5) | 190 (7.5) |
| B - Centre Ram to Claw | 125 (4.94) | 143 (5.625) | 181 (7.125) |
| C - Base Length | 246 (9.69) | 273 (10.75) | 339 (13.375) |
| D - Overall Depth | 289 (11.38) | 311 (12.25) | 384 (15.375) |
| F - Ram Diameter | 60 (2.38) | 76 (3) | 108 (4.25) |
| H - Closed Height | 452 (17.88) | 470 (18.5) | 533 (21) |
| J - Base to Claw | 67 (2.63) | 73 (2.875) | 73 (2.875) |
| K - Claw Depth | 41 (1.61) | 45 (1.77) | 48 (1.89) |
| Service Kit Number | 133506 | 133511 | 133518 |

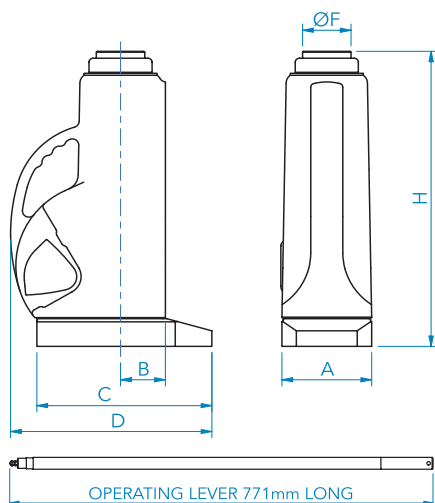
18" PLAIN HYDRALITE



| Product Code | PS1840 |
|----------------------------|--------------------|
| Ram Capacity | 40 Tonne |
| Oil Capacity | 3.7 Litres |
| Weight | 47.7 kg |
| Working Pressure | 632 bar (9166 PSI) |
| Maximum Effort on Lever | 50 kg |
| Stroke - mm (ins) | 457 (18) |
| Lift per Stroke - mm (ins) | 0.5 (0.02) |
| Dimensions | mm (ins) |
| A - Width | 190 (7.5) |
| B - Centre Ram to Face | 79 (3.1) |
| C - Base Length | 324 (12.8) |
| D - Overall Depth | 378 (14.9) |
| F - Ram Diameter | 89 (3.5) |
| H - Closed Height | 686 (27) |
| Service Kit Number | 133529 |



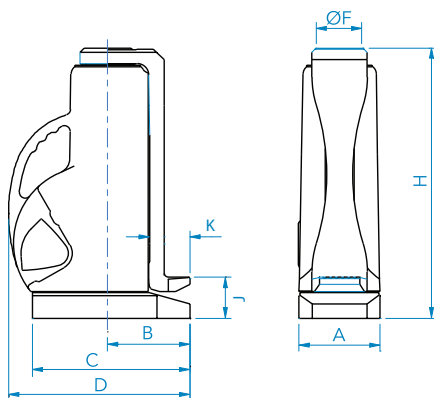
18" SCREWED HYDRALITE



| Product Code | PS1840S |
|----------------------------|--------------------|
| Ram Capacity | 40 Tonne |
| Oil Capacity | 3.7 Litres |
| Weight | 47.7 kg |
| Working Pressure | 632 bar (9166 PSI) |
| Maximum Effort on Lever | 50 kg |
| Stroke - mm (ins) | 457 (18) |
| Lift per Stroke - mm (ins) | 0.5 (0.02) |
| Dimensions | mm (ins) |
| A - Width | 190 (7.5) |
| B - Centre Ram to Face | 79 (3.1) |
| C - Base Length | 324 (12.8) |
| D - Overall Depth | 378 (14.9) |
| F - Ram Diameter | 89 (3.5) |
| H - Closed Height | 686 (27) |
| Service Kit Number | 133934 |



18" CLAW / TOE HYDRALITE



| Product Code | PS1840 |
|----------------------------|--------------------|
| Ram Capacity | 40 Tonne |
| Claw Capacity | 16 Tonne |
| Oil Capacity | 3.7 Litres |
| Weight of Jack | 47.7 kg |
| Weight of Claw | 16.2 kg |
| Working Pressure | 632 bar (9166 PSI) |
| Maximum Effort on Lever | 50 kg |
| Stroke - mm (ins) | 457 (18) |
| Lift per Stroke - mm (ins) | 0.5 (0.02) |
| Dimensions | mm (ins) |
| A - Width | 190 (7.5) |
| B - Centre Ram to Face | 79 (3.1) |
| C - Base Length | 324 (12.8) |
| D - Overall Depth | 378 (14.9) |
| F - Ram Diameter | 89 (3.5) |
| H - Closed Height | 711 (28) |
| J - Base to Claw | 63 (2.5) |
| K - Claw Depth | 48 (1.9) |
| Service Kit Number | 133529 |

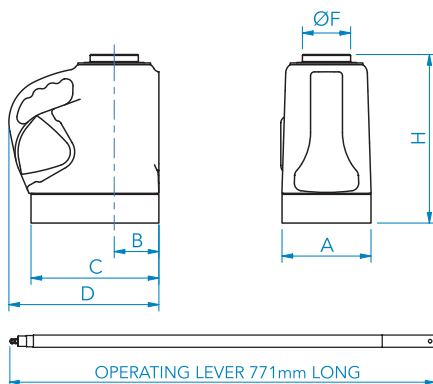


TANGYE

72 TONNE HYDRALITE FOR AIRCRAFT

The 72 tonne Hydralite is specifically designed for aircraft maintenance; the jack's ram includes a custom socket design which makes it suitable for use with a number of different aircraft including:

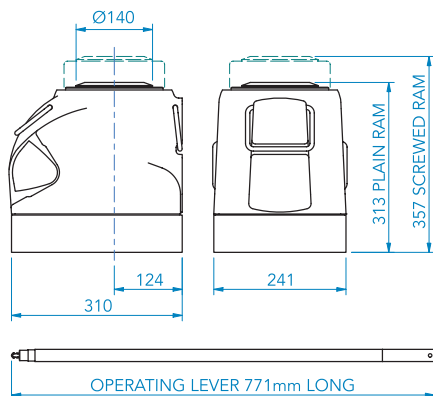
- MD80
- A320
- A330
- B737CL
- B737NG
- B767-2/300
- B767-400



| Product Code | PS672Z |
|----------------------------|----------------------|
| Ram Type | Plain |
| Ram Capacity | 72 Tonne |
| Oil Capacity | 1.71 Litres |
| Weight | 36.5 kg |
| Working Pressure | 771 bar (11,182 PSI) |
| Maximum Effort on Lever | 50 kg |
| Stroke - mm (ins) | 152 (6) |
| Lift per Stroke - mm (ins) | 0.5 (0.02) |
| Dimensions | mm (ins) |
| A - Width | 190 (7.5) |
| B - Centre Ram to Face | 92 (3.6) |
| C - Base Length | 251 (9.9) |
| D - Overall Depth | 286 (11.3) |
| F - Ram Diameter | 108 (4.3) |
| H - Closed Height | 299 (11.8) |
| Service Kit Number | 133518 |

100 TONNE HYDRALITE

The 100 tonne Hydralite is powered by two internal pumps. The low pressure, fast-speed plunger moves the ram out quickly, up to a load about 8 tonnes on the ram, before transfer to the high pressure plunger becomes necessary. The lift of the ram per stroke of the lever is 1.1 mm on low pressure and 0.1 mm on high pressure.



| Product Code | P6100 | P6100S |
|---------------------------------|--------------------|------------|
| Ram Type | Plain | Screwed |
| Ram Capacity | 100 Tonne | |
| Oil Capacity | 2.23 Litres | 2.3 Litres |
| Weight | 49 kg | 53 kg |
| Working Pressure | 640 bar (9280 PSI) | |
| Maximum Effort on Lever | 79 kg | |
| Stroke - mm (ins) | 152 (6) | |
| Lift per Stroke High - mm (ins) | 0.1 (0.005) | |
| Lift per Stroke Low - mm (ins) | 1.1 (0.043) | |
| Service Kit Number | 995058 | |

HYDRAPAK RANGE

Hydrapak are kept throughout the world as a back-up system or alternative pumping method when power packs or power sources fail.

Fast

Two speed operation gives rapid prefill or no load approach, push button changeover to high pressure

Compact

Small in size but develops up to 1000 bar pressure

Portable

Lightweight aluminium keeps weight down to 4.5 kg

Safe

Optional factory fitted relief valve prevents over pressurisation

Range

Seven working pressures from 110 bar to 1000 bar available

High Flow

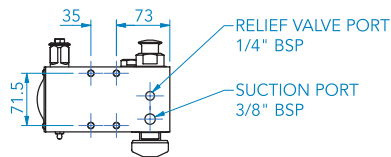
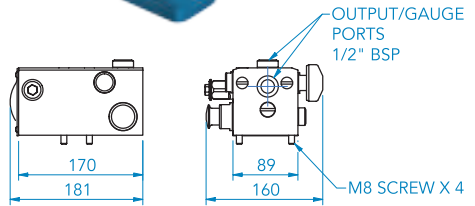
Interchangeable plungers allow selection of optimum pressure / flow characteristics

Seals

Choice of EP or Nitrile seals

Accessories

Double acting valve, cisterns, tanks, frames, gauges and fixing kits are available



Pressure / Flow Characteristics

| | PHO6000 | | PHO5000 | | PHO4000 | | PHO3000 | | PHO2000 | | PHO1000 | | PHO0000 | |
|------------------------------------|---------|--------|---------|--------|---------|--------|---------|--------|---------|--------|---------|--------|---------|--------|
| | BAR | PSI | BAR | PSI | BAR | PSI | BAR | PSI | BAR | PSI | BAR | PSI | BAR | PSI |
| Max Pressure H.P. Stage | 110 | 1600 | 172 | 2500 | 310 | 4500 | 448 | 6500 | 552 | 8000 | 700 | 10000 | 1000 | 14,500 |
| Max Pressure L.P. Stage | 52 | 750 | 52 | 750 | 52 | 750 | 52 | 750 | 52 | 750 | 52 | 750 | 52 | 750 |
| | CC | CU INS | CC | CU INS | CC | CU INS | CC | CU INS | CC | CU INS | CC | CU INS | CC | CU INS |
| Displacement per Stroke H.P. Stage | 22.61 | 1.38 | 14.47 | 0.883 | 8.13 | 0.496 | 5.65 | 0.345 | 4.57 | 0.279 | 3.62 | 0.221 | 2.5 | 0.153 |
| Displacement per Stroke L.P. Stage | 50.8 | 3.1 | 50.8 | 3.1 | 50.8 | 3.1 | 50.8 | 3.1 | 50.8 | 3.1 | 50.8 | 3.1 | 50.8 | 3.1 |

Cubic Centimetres (CC) and Cubic Inches (CU INS)

HYDRAPAK ACCESSORIES

Fluid Compatibility

The standard pump is supplied with nitrile seals suitable for use with mineral oils, water, oil/water emulsions, paraffin and glycerine. The pump body should not be left in contact with water for prolonged periods. After using salt water in the pump, thoroughly flush clean. Ethylene Propylene (E.P.) seals are available to order for applications using phosphate ester based hydraulic fluids and vegetable based brake fluid. E.P. seals are compatible with skydrol 500B and LD4. Please contact our technical department if in doubt.

Pressure Relief Valve

A factory fitted pressure relief valve may be fitted to the pump and set at any specified pressure between 56 and 700 bar. We strongly recommend that all Hydrapak are fitted with a pressure relief valve to prevent overloading and exceeding maximum safe working pressures.

Gauges

100 mm gauges and fixing kit are available for horizontal mounting of a pressure gauge above the top face of the pump. For pumps with a double acting valve a fixing kit for vertical mounting is supplied. Seven standard gauges corresponding to the seven standard pressure ratings are available.

Double Acting Valve

A three position, four port valve for control of double acting cylinders is offered as a factory fitted option. Valve outlets are tapped 3/8 NPT. There is no release valve assembly fitted to the pump body and although internal leakage of the valve is minimal, isolation valves should be fitted to circuits where pressure must be sustained.

Tanks

A range of standard tanks to satisfy most requirements is illustrated in the Hydrapak Configurator on p20. The Hydrapak can easily be fitted to custom built tanks.

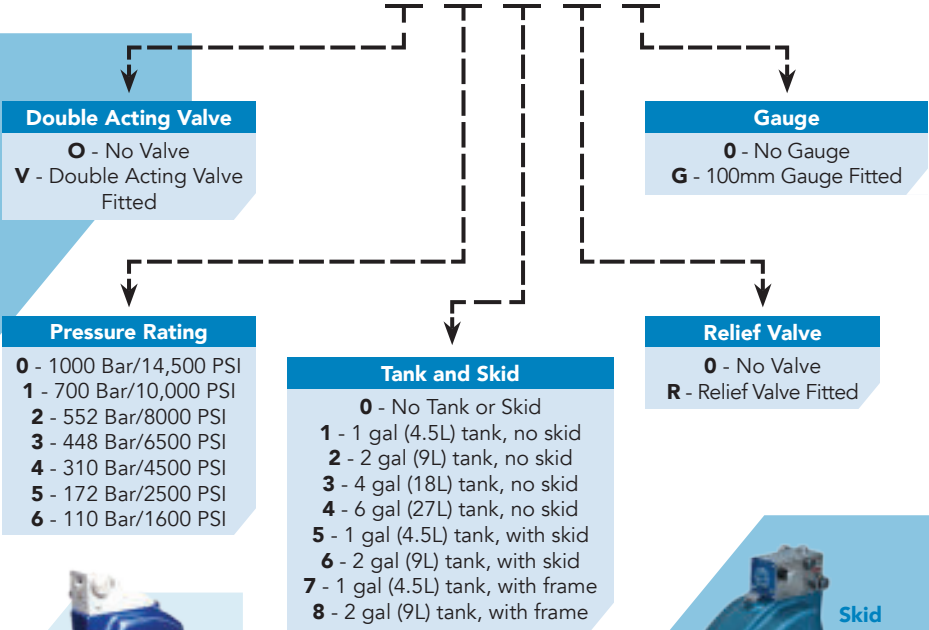
Interchangeable Plungers

High/low pressure plunger kits can be supplied to change the pressure/flow characteristics to any of the seven standards.



HYDRAPAK CONFIGURATOR

P H



Tubular
Frame



Skid

HYDROSTATIC TEST PUMP

Hydrostatic testing is a vital element in verifying gas and fluid pressure vessels such as pipelines, cylinders, boilers, and fuel tanks. The Tangye HTP Hydrostatic Test Pump is a self-contained, portable unit capable of providing up to 1000 Bar working pressure.

Hydrostatic Test Pump supplied complete with tank, skid, handle & gauge

Range of pressures available

Relief valve fitted as standard

Compatible with a range of fluid media

Hoses available on request

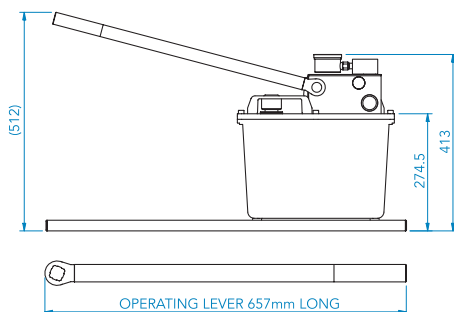
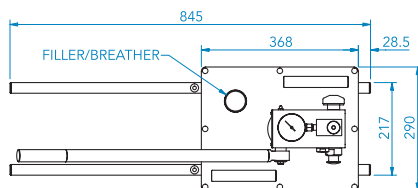
Robust design

23 kg total dry weight

Up to 1000 Bar working pressure

16 Litre capacity across the pressure range

High pressure and low pressure stages with manual change over at pump



TANGYE

HYDROSTATIC TEST PUMP

| Model Number | | H.P. Stage Max | | L.P. Stage Max | | L.P. Stage Displacement per Stroke (CC) | Valve Type | H.P. Stage Displacement per Stroke (CC) | Outlet Port | Suction Port |
|---------------|-----------|----------------|-------|----------------|-----|---|------------|---|-------------|--------------|
| Complete Unit | Pump Only | Bar | PSI | Bar | PSI | | | | | |
| HTP110 | PHO60R0 | 110 | 1600 | 52 | 750 | 50.8 | 2-way | 22.6 | 1/2" BSPP | 3/8" BSPP |
| HTP170 | PHO50R0 | 172 | 2500 | 52 | 750 | 50.8 | 2-way | 14.5 | 1/2" BSPP | 3/8" BSPP |
| HTP310 | PHO40R0 | 310 | 4500 | 52 | 750 | 50.8 | 2-way | 8.1 | 1/2" BSPP | 3/8" BSPP |
| HTP440 | PHO30R0 | 448 | 6500 | 52 | 750 | 50.8 | 2-way | 5.7 | 1/2" BSPP | 3/8" BSPP |
| HTP550 | PHO20R0 | 552 | 8000 | 52 | 750 | 50.8 | 2-way | 4.6 | 1/2" BSPP | 3/8" BSPP |
| HTP700 | PHO10R0 | 700 | 10000 | 52 | 750 | 50.8 | 2-way | 3.6 | 1/2" BSPP | 3/8" BSPP |
| HTP1000 | PHO00R0 | 1000 | 14500 | 52 | 750 | 50.8 | 1-way | 2.5 | 3/8" BSPP | 3/8" BSPP |

SPECIAL ENGINEERED PRODUCTS



Tangye's considerable experience and engineering skills, along with cutting edge design and manufacturing facilities, enables Tangye to work with customers to fulfil specific non-standard requirements through tailor made designs, modifications or adaptations.

Contact Tangye to discuss your requirements.

All products are manufactured and tested in the UK using quality European materials and in accordance with ISO 9001. Tangye equipment is used in a wide range of industries including Construction, Industrial, Automotive, Aerospace, Mining, Rail, Nuclear and Offshore.

TANGYE



Distributed by:

Worlifts Limited

Guild House
Sandy Lane
Wildmoor
Bromsgrove
Worcestershire
B61 0QU

Tel: **+44 (0)121 460 1113**

Fax: **+44 (0)121 460 1116**

Email: **info@worlifts.co.uk**

Web: **www.worlifts.co.uk**