



WORLIFTS

HydraHire Division

Specialists in jacking, lifting, supporting and bolting

Hydraulic Hire Brochure



**National coverage with support for
all products and services**

0121 460 1113

hire@worlifts.co.uk
worlifts.co.uk/hire



Introduction to HydraHire

WORLIFTS have been specialists in the field of Hydraulic tools for over 40 years.

The HydraHire division is focused on supplying the industry with the most modern hydraulic equipment from the world's leading manufacturers.

WORLIFTS HydraHire is the 'No 1 Force' in industrial hydraulic tool hire, hydraulic tool rental and hydraulic jacking equipment hire.

We are experienced in providing hydraulic tools, hydraulic jacks for hire and hydraulic jacking equipment hire along with complementing products and accessories.

With our many years' experience of applications and comprehensive product knowledge, with HydraHire you are assured of hiring the best quality hydraulic jacking equipment, hydraulic maintenance tools, torque tooling and associated high pressure equipment.

Our extensive hydraulic hire fleet consists of industrial heavy duty hydraulic jacks, hydraulic jacking equipment, including hydraulic cylinders, hydraulic hand pumps, electric pumps, pneumatic pumps, valves, manifolds, hoses and pressure gauges from world leading suppliers ENERPAC, TANGYE and SIMPLEX.

You can be safe in the knowledge that all equipment hired from HydraHire has been fully inspected, examined, tested and certified to meet all current statutory regulations and requirements. Customers also have the option of requesting equipment to be fully assembled and set up in a 'ready to use' configuration.

Our hydraulic jacks and cylinders range from 5 to 800 tonne lifting capacity in a variety of classifications i.e. aluminium, standard, locking collar, flat, hollow and double acting. These can all be utilised in the majority of industrial sectors.

Common Applications:

- Machinery moving, installations or 'bumping'
- Fabrication and assembly
- Press servicing and overhaul
- Heavy lifting and levelling
- Controlled movement and levelling
- Bridge jacking
- Structural load transfer
- Bridge bearing support and bearing replacement
- Pre-stressing, pre-loading and post tensioning
- Weighing and COG operations
- Bolt tightening

Our fully trained staff are available to discuss technical issues and offer safety advice to ensure that all customers receive the correct product for their application.

contents

General Purpose Cylinders	3
Low Height Cylinders	3
Hollow Cylinders	4
Aluminium Cylinders	4
High Tonnage Cylinders	5
Lifting & Spreader Wedges	6
Hydraulic Hand Pumps & Accessories	7
Electric/Air Operating Pumps	8
Hydraulic Jacks	9
Mechanical Jacks	10
Cribbing Blocks	10
Bolting Equipment	11-14
Safety Information	15-18

General Purpose Cylinders (Single Acting)



RC Series

Order Code	Capacity Class (Ton)	Closed Height (mm)	Stroke (mm)	Outside Dia. (mm)	Oil Req. (cm3)	Weight (kg)	Enerpac-Model Number
HHGP505	5	215	127	38	10	1.9	RC-55
HHGP102	10	121	54	57	78	2.3	RC-102
HHGP104	10	171	105	57	152	3.3	RC-104
HHGP106	10	247	156	57	226	4.4	RC-106
HHGP1010	10	349	257	57	373	6.4	RC-1010
HHGP2504	25	215	102	85	339	8.2	RC-254
HHGP2506	25	273	158	85	525	10.0	RC-256
HHGP2510	25	374	261	85	867	14.1	RC-2510
HHGP504	50	227	101	127	719	19.1	RC-504
HHGP506	50	282	159	127	1,131	23.1	RC-506
HHGP756	75	285	156	146	1,601	29.5	RC-756
HHGP1006	95	357	168	177	2,239	59.0	RC-1006

For extra stability when jacking, why not utilise a base plate – see page 8 for further details

Additional sizes are available on request

Low Height Cylinders (Single Acting)



RCS, RSM & CULP Series

Order Code	Capacity Class (Ton)	Closed Height (mm)	Stroke (mm)	Outside Dia. (mm)	Oil Req. (cm3)	Weight (kg)	Model Number
HHPC5	5	32	6	58x41	4	1.0	RSM-50
HHPC10	10	43	11	82x55	18	1.4	RSM-100
HHPC20	20	51	11	101x76	32	3.1	RSM-200
HHPC30	30	58	13	117x95	55	4.5	RSM-300
HHPC50	45	66	16	140x114	99	6.8	RSM-500
HHPC75	75	79	16	165x139	164	11.3	RSM-750
HHPC100	90	85	16	178x153	203	14.5	RSM-1000
HHPC150	150	100	16	215x190	317	26.3	RSM-1500
HHLH10	10	88	38	69	55	2.7	RCS-101
HHLH20	20	98	45	92	129	5.0	RCS-201
HHLH30	30	117	62	101	261	6.8	RCS-302
HHLH50	45	122	60	124	373	10.0	RCS-502
HHLH100	90	141	57	165	722	20.7	RCS-1002
HHVLH1	▲ 10	27.5	6	72	8.3	1.0	CULP-10
HHVLH2	▲ 20	32	6	90	28.3	1.7	CULP-20
HHVLH3	▲ 30	35	6	105	44.2	2.5	CULP-30

▲ When using a Lock Nut Cylinder, add a V-66 manual check valve for additional safety

Additional sizes are available on request

Hollow Cylinder (Single Acting)



Order Code	Capacity Class (Ton)	Closed Height (mm)	Stroke (mm)	Outside Dia. (mm)	Oil Req. (cm3)	Centre Hole Dia (mm)	Weight (kg)	Model Number
HHHC123	13	184	76	69	136	19.5	4.4	RCH-123
HHHC202	20	162	49	98	150	26.9	7.7	RCH-202
HHHC302	30	178	64	114	476	33.3	10.9	RCH-302
HHHC306	30	330	155	114	722	33.3	21.8	RCH-306
HHHC603	60	247	76	159	626	53.8	28.1	RCH-603
HHHC1003	95	254	76	212	1,011	79.0	63.0	RCH-1003

RCH Series

Aluminium Cylinders (Single Acting)



Order Code	Capacity Class (Ton)	Closed Height (mm)	Stroke (mm)	Outside Dia. (mm)	Oil Req. (cm3)	Weight (kg)	Model Number
HHAC204	20	224	100	85	312	4.1	RAC-204
HHAC304	30	231	100	100	442	5.2	RAC-304
HHAC504	50	236	100	130	709	9.8	RAC-504
HHAC506	50	286	150	130	1,063	11.1	RAC-506

RAC Series

Aluminium Cylinders – Lock Nut (Single Acting)



HHACL506	50	336	150	130	1,063	11.9	RACL-506
HHACL5010	50	436	250	130	1,771	14.5	RACL-5010

When using a Lock Nut Cylinder, add a V-66 manual check valve for additional safety

Additional sizes are available on request

RACL Series

High Tonnage Cylinders (Single Acting)



HCG Series

Order Code	Capacity Class (Ton)	Closed Height (mm)	Stroke (mm)	Outside Dia. (mm)	Oil Req. (cm3)	Weight (kg)	Model Number
HHHT506	50	283	150	130	1,178	24	HCG-506
HHHT1004	100	252	100	175	1,431	40	HCG-1004
HHHT1006	100	302	150	175	2,147	46	HCG-1006

Low Height Lock Nut Cylinders with Tilt Saddles (Single Acting)



LPL Series

Order Code	Capacity Class (Ton)	Closed Height (mm)	Stroke (mm)	Outside Dia. (mm)	Oil Req. (cm3)	Weight (kg)	Model Number
HHLHLN6	60	126	50	140	433.0	15	LPL-602
HHLHLN10	100	137	50	173	715.7	25	LPL-1002
HHLHLN15	150	148	45	220	1021.4	43	LPL-1602
HHLHLN20	200	155	45	245	1275.9	55	LPL-2002

When using a Lock Nut Cylinder, add a V-66 manual check valve for additional safety

Additional sizes are available on request

High Tonnage Lock Nut Cylinders (Single Acting)



HCL Series

Order Code	Capacity Class (Ton)	Closed Height (mm)	Stroke (mm)	Outside Dia. (mm)	Oil Req. (cm3)	Weight (kg)	Model Number
HHHTLN504	50	214	100	130	785	22	HCL-504
HHHTLN506	50	264	150	130	1,178	27	HCL-506
HHHTLN5010	50	364	250	130	1,963	38	HCL-5010
HHHTLN1006	100	287	150	175	2,147	54	HCL-1006
HHHTLN2506	250	349	150	280	5,446	167	HCL-2506

When using a Lock Nut Cylinder, add a V-66 manual check valve for additional safety

Additional sizes are available on request

Lifting Wedges (Single Acting)



Order Code	Capacity Class (Ton)	Tip Clearance (mm)	Maximum Spread (mm)	Oil Req. (cm3)	Weight (kg)	Model Number
HHLW5	1	12.8	94	10	2.3	WR-5

WR Series



Order Code	Capacity Class (Ton)	Tip Clearance (mm)	Lifting Stroke (mm)	Oil Req. (cm3)	Weight (kg)	Model Number
HHLW16	16	10	21 or 51 (with Stepped Block)	78	9.0	LW-16 (LWB-1)

To utilise the maximum lifting stroke of this equipment request the stepped block when ordering

LW Series

Spreader Wedges (Single Acting)



Order Code	Capacity Class (Ton)	Tip Clearance (mm)	Maximum Spread (mm)	Oil Req. (cm3)	Weight (kg)	Model Number
HHFS14	14	6	61 or 80 (with stepped Block)	78	7.1	FSH14 (FSB-1)

To utilise the maximum spread of this equipment request the stepped blocks when ordering

FSH Series

Hydraulic Hand Pumps & Accessories



Order Code	Oil Capacity (cm3)	Details	Weight (kg)	Model Number
HHHP09	901	Two Speed, Lightweight For use with Single Acting Cylinders	4.5	P-392
HHHP22	2,200	Two Speed, Steel For use with Single Acting Cylinders	11.3	P-80
HHHP74	7,423	Two Speed, Steel For use with Single Acting Cylinders	28.2	P-462

All our hand pumps are supplied with 63mm analogue pressure gauges

Hoses c/w male QR couplers each end



Order Code	Length	Model Number
HHHA2	1.8m	HC-7206C
HHHA3	3m	HC-7210C
HHHA6	6.1m	HC-7220C

Additional sizes are available on request

Manifolds



Order Code	Description	Model Number
HHCM2	2 Way Control Manifold	AM-21
HHCM4	4 Way Control Manifold	AM-41
HHBM4	4 Way Bar Manifold	A-65
HHSM5	5 Way Splitter	A-66

Additional Accessories



Order Code	Description	Model Number
HHCPG	Calibrated Pressure/Force Gauges are available if required POA	Various
HHBP	Cylinder Base Plates	JB1-
HHMCV	Manual Check Valve (Load Holding)	V-66
HHNV	Needle Valve	V-82

Electric, Air & Battery Powered Pumps



Order Code	Oil Reservoir Size (Litres)	Description	Weight (kg)	Model Number
HHEP109	1.9	110v Pump c/w Pendant Control	10.00	PUJ
HHEP308	3.8		15.4	
HHEP20	20	110v Pump c/w Manual Valve Supplied with Pressure Gauge and in Rollcage	80	ZE4
HHEP40	40		100	
HHAP1	1.0	Air Powered Foot Pump	9	XA11G
HHAP2	2.0		12	XA12G
HHBP1	1.0	Battery Pump c/w Strap, 2 Batteries and Charger	10	XC1201



Jacks - Hydraulic



Order Code	Capacity (tonne)	Closed Height (mm)	Stroke (mm)	Weight (kg)	Model Number
HHTH6.5	6.5	140	76	3.6	8104-H
HHTH5	5.0	41 (Toe) 325 (Ram)	178	18	9501-W
HHTH20	20 on Ram 8 on Claw	276 (Ram) 67 (Claw)	152	17	PS-620C
HHTH30	30 on Ram 12 on Claw	281 (Ram) 73 (Claw)	152	22	PS-630C
HHTH60	60 on Ram 24 on Claw	327 (Ram) 73 (Claw)	152	46	PS-660C
HHTJ109S	10	57 (Toe) 516 (Head)	229	26.4	TJ109S
HHTJ109L	10	55 (Toe) 410 (Head)	229	18.6	TJ109LS
HHH5360	5	25 (Toe) 368 (Head)	205	25	H5

Machinery Skates



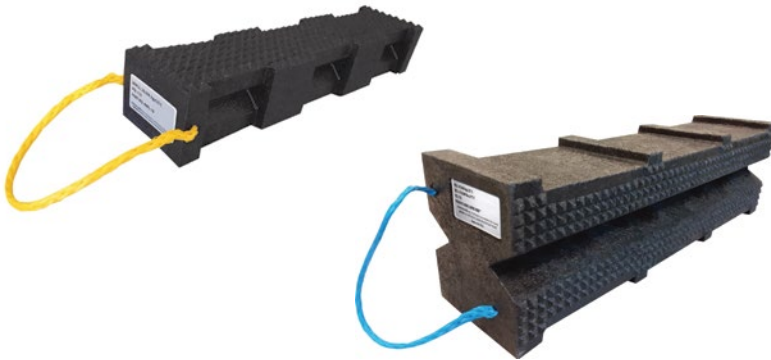
Order Code	Capacity per Set (kg)	Description	Rollers	Weight (kg)	Model Number
HHMS6	6,000	Poly Wheeled Skate Set	Front: 4x Nylon Rear: 8x Nylon	45	SK6T
HHMS20	20,000	Caterpillar Type Skate Set	Steel: 18mm	50	SK20

Jacks - Mechanical



Order Code	Capacity (tonne)	Closed Height (mm)	Stroke (mm)	Weight (kg)	Model Number
HHMJ5	4.54	45 (Toe) 432 (Head)	254	13.6	RJ-85A
HHMJ10	9.07	51 (Toe) 550 (Head)	300	19	RJA-1022

Cribbing Blocks



Order Code	WLL (Kg)	Dimensions	Weight (kg)	Model Number
HHCB18	20,500	Pyramid Crib 4" x 4" x 18"	2.72	44-W18
HHCB24	49,900	Super Crib 6" x 7" x 24"	10.43	67WSC-24
HHCBW3	Support only	Wedge 3" x 8.5"	0.68	3W
HHCBW6	Support only	Wedge 6" x 8.5"	1.36	6W

Bolting Equipment



Order Code	Capacity (tonne)	Bolt Range (mm)	Hex Nut Range (mm)	Weight (kg)	Model Number
HHNS10	10	M12-M16	19-24	2.0	NC-1924
HHNS15	15	M16-M22	24-32	3.0	NC-2432
HHNS20	20	M22-M27	32-41	4.4	NC-3241

These Units will require a Hand pump c/w Gauge and a hose

Hydraulic Nut Splitters



Order Code	Capacity (tonne)	Stud Size (mm)	Standard Wedge (mm)	Stroke (mm)	Weight (kg)	Model Number
HHFAT10	10	31-41	3-28	54	31	FS-109

Flange Spreader Matching Chart

ASA Rating (bar)	Pipe Size (mm)
	FS-109
10	558 - 1066
20	406 - 711
27	355 - 609
35	304 - 508
62	203 - 406
103	101 - 203
172	76 - 101



Spreaders/Alignment Tools



Order Code	Capacity Class (ton)	Tip Clearance (mm)	Maximum Spread (mm)	Oil Req. (cm3)	Model Number
HHFS14	14	6	61 or 80 (with stepped Block)	78	FSH-14

Spreaders/Alignment Tools

Bolting Equipment



Order Code	Capacity Class (ton)	Min Bolt Size (mm)	Flange Wall Thickness (mm)	Weight (kg)	Model Number
HHFAT1	1	16	14-82	1.6	ATM-2
HHFAT4	4	24	30-133	8.6	ATM-4

Spreaders/Alignment Tools



Pneumatic Tools

Order Code	SQ Drive Size	Air Consumption	N.m Range lbf.ft Range	Weight (kg)	Model Number
HHNPT800	3/4"	19 litres/sec (40 CFM)	160.0-800.0 N.m 118-590 lbf.ft	4.25	PTM52-800-B
HHNPT1350	1"	19 litres/sec (40 CFM)	270 - 1350 N.m 200.0 - 1000.0 lbf.ft	6.1	PTM72-1350-B
HHNPT4500	1 1/2"	19 litres/sec (40 CFM)	900.0 - 4500.0 N.m 660.0 - 3300.0 lbf.ft	13.3	PTM119-4500B



Hydraulic Torque Wrench Pump – c/w 6m Hose Set

Order Code	Supply	For use with	Weight (kg)	Model Number
HHTWP	110v	All S and W Series Torque Wrenches	41	TQ-700B c/w THQ-706T
HHTWP	Air	All S and W Series Torque Wrenches	45	ZA4208TX-QRU c/w THQ-706T



S Series – Square Drive Hydraulic Torque Wrenches

Order Code	Drive Size	Torque Range NM Torque Range Ft.lbs	Weight (kg)	Model Number
HHSDTW15	3/4"	195 – 1952 144 – 1440	3.2	S-1500X
HHSDTW30	1"	438 – 4,373 323 – 3,225	5.6	S-3000X
HHSDTW60	1 1/2"	834 – 8,338 615 – 6,150	9.2	S-6000X
HHSDTW110		1,516 – 15,151 1,118 – 11,175	15.8	S-11000X



W Series – Low Profile Hexagon Hydraulic Torque Wrenches

Order Code	Hex Range (mm)	Torque Range NM Torque Range Ft.lbs	Drive Unit Weight (kg)	Model Number
HHLPTW20	30 – 60	276 – 2,766 204 – 2,040	1.4	W-2000X
HHLPTW40	36 – 85	566 – 5,661 417 – 4,175	2.0	W-4000X
HHLPTW80	50 – 105	1,148 – 11,484 847 – 8,470	3.0	W-8000X
HHLPTW150	65 – 115	2,078 – 20,785 1,533 – 15,330	5.0	W-15000X

We have a wide range of cassette sizes to suit the above low profile drive units – contact us for more details

Sockets/reaction equipment



To Suit	Description
S – Series Torque Wrenches	Impact Sockets 3/4" to 1 1/2" Drive Various sizes available
W-Series Torque Wrenches	Hexagon inserts for cassettes Various sizes available
S-Series and W-Series Torque Wrenches	Reaction paddles and tube extensions

110v Evo Torque Powered Torque Tool



Order Code	S1 Drive Size	N.M Range lbf.ft Range	Weight (kg)	Model Number
HH ET72-2000	1"	400 - 2,000 N.M 295.00 - 1,475 lbf.ft	12	ET-72-2000-110
HH ET92-4000	1"	800 - 4,000 N.M 590 - 2,950 lbf.ft	15.5	ET-92-4000-110

Safety/Useful Information



When used correctly, hydraulic power is one of the safest methods of applying force to your work. And to that end we offer some DO's and

DON'Ts, simple common sense points which apply to practically all Enerpac hydraulic products.

- Lift slowly and check the load often
- Avoid standing in the line of force
- Anticipate possible problems and take steps to avoid them.

The line drawings and application photo's of Enerpac products throughout this catalog are used to portray how some of our customers have used hydraulics in industry.

In designing similar systems, care must be taken to select the proper components that provide safe operation and fit your needs.

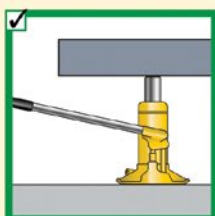
Check to see if all safety measures have been taken to avoid the risk of injury and property damage from your application or system.

Enerpac can not be held responsible for damage or injury, caused by unsafe use, maintenance or application of its products.

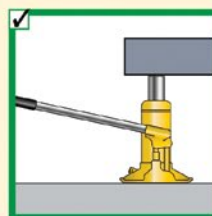
Please contact the Enerpac office or a representative for guidance when you are in doubt as to the proper safety precautions to be taken in designing and setting up your particular system.

In addition to these tips, every Enerpac product comes with instructions spelling out specific safety information. Please read them carefully.

Jacks



Provide a level and solid support for the entire jack base area.



The entire jack saddle must be in contact with the load. Movement of the load to be in the same direction as jack plunger.

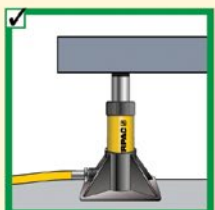


Never place any part of your body under the load. Ensure the load is on a solid support before venturing under.

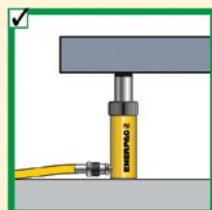


Remove the jack handle when it is not being used.

Cylinders



Provide a solid support for the entire cylinder base area. Use cylinder base attachment for more stability.



The entire cylinder saddle must be in contact with the load. Movement of the cylinder must be parallel with the movement of the load.



Do not use cylinder without saddle. This will cause plunger to "mushroom". Saddles distribute load evenly on the plunger.



As with jacks, never place any part of your body under the load. Load must be on cribbing before venturing under.



Always protect cylinder threads for use with attachments.

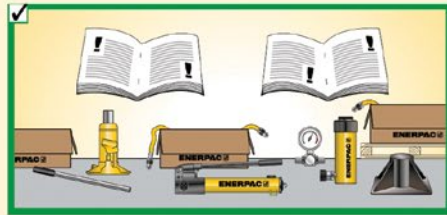


Keep hydraulic equipment away from open fire and temperatures above 65 °C (150 °F).

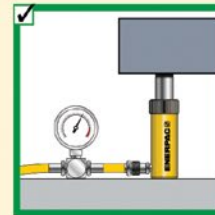
Safety/Useful Information

General

80% Manufacturer's rating of load and stroke are maximum safe limits. Good practice encourages using only 80% of these ratings! **80%**



Always read instructions and safety warnings that come with your Enerpac hydraulic equipment.

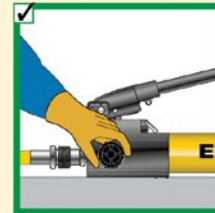


Don't override the factory setting of relief valves. Always use a gauge to check system pressure.

Pumps



Don't use handle extenders. Hand pumps should be easy to operate when used correctly.



Close release valve finger tight. Using force will ruin the valve.



Fill pump only to recommended level. Fill only when connected cylinder is fully retracted.



Use only genuine Enerpac hydraulic oil. Wrong fluid can destroy seals and pump and will render your warranty null and void your guarantee.

Hoses and couplers



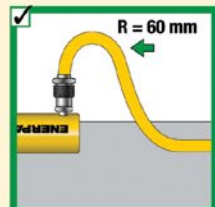
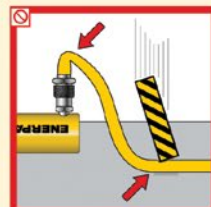
Clean both coupler parts before connecting. Use dust caps when coupler parts are not connected.



Detach cylinder only when fully retracted or use shut-off valves or safety valves to lock-in cylinder pressure.



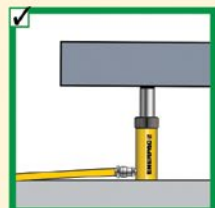
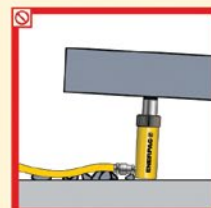
Keep hoses away from the area beneath loads.



Don't kink hoses. Bending radius should be at least 60 millimetres. Don't drive over or drop heavy objects on hoses.



Don't lift hydraulic equipment by the hoses.



Never allow the cylinder to be lifted off the ground through the couplers.

Safety/Useful Information

1 Cylinder

Applies hydraulic force.
Page 5

2 Cylinder Base Plate

For applications like lifting where additional cylinder stability is required.
Page 10

3 Pump

Provides hydraulic flow.
Page 63

4 Hose

Transports hydraulic fluid.
Page 116-117

5 Male Coupler

For quick connection of the hose to system components.
Page 118-119

6 Female Coupler

For quick connection of the hose end to the system components.
Page 118-119

7 Gauge

To monitor pressure of the hydraulic circuit.
Page 122-128

8 Gauge Adaptor

For quick and easy gauge installation.
Page 128-129

9 Swivel Connector

Allows proper alignment of valves and/or gauges. Used when units being connected cannot be rotated.
Page 129

10 Auto-Damper Valve V-10

Used to protect gauge from damage due to sudden pressure pulses in the system. Needs no adjustment and allows correct positioning of gauge, prior to tightening.
Page 130-131

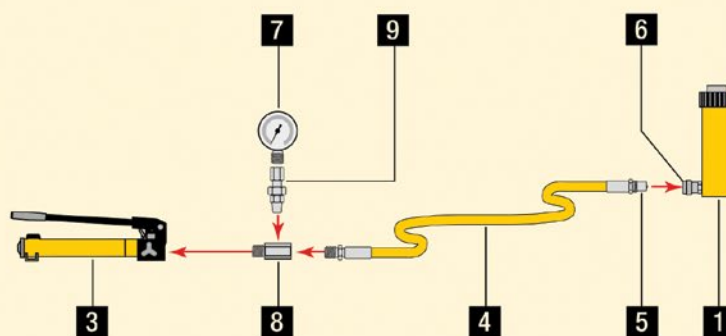
11 4-Way Directional Control Valve

Controls the direction of hydraulic fluid in a double-acting system.
Page 110-111

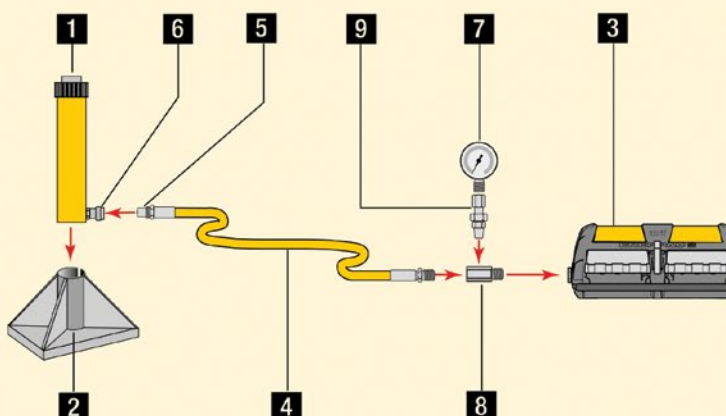
Single-acting push application, such as in a press.

The hand pump offers controlled cylinder advance, but may require many hand pump strokes in longer stroke applications when the cylinder capacity is 25 ton or above.

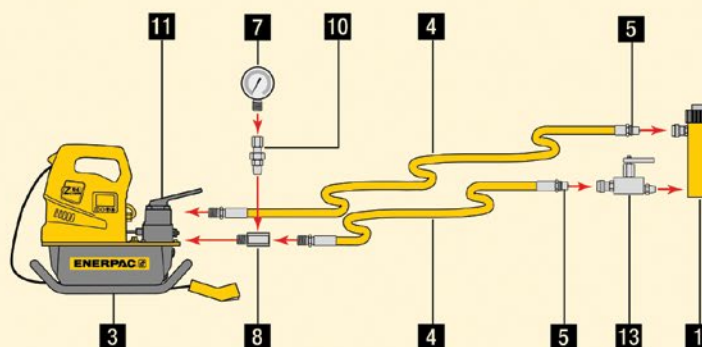
Examples of pump, hose and cylinder sets can be found on pages 52-55.



Single-acting cylinder with longer stroke used for lifting applications.

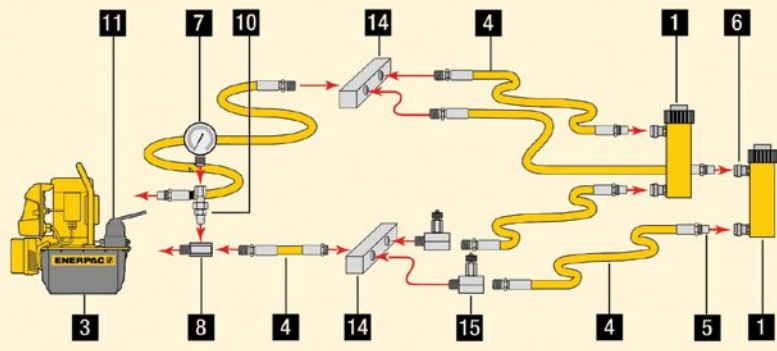


Double-acting cylinder set-up used for lifting applications where a slow controlled descent of the load must be maintained.



Safety/Useful Information

Double-acting cylinder set-up used in a push/pull application.



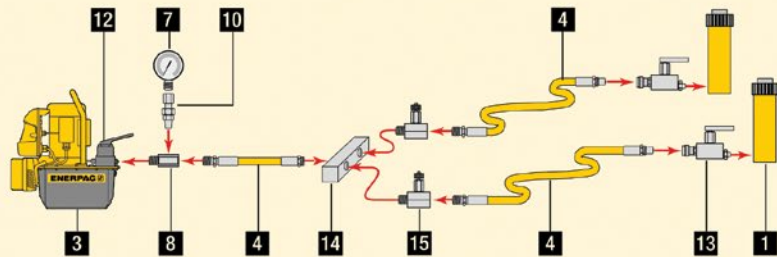
12 3-Way Directional Control Valve
Controls the direction of hydraulic fluid in a single-acting system.
Page 110-111

13 Safety Holding Valve
Controls load descent in lifting applications.
Page 130-131

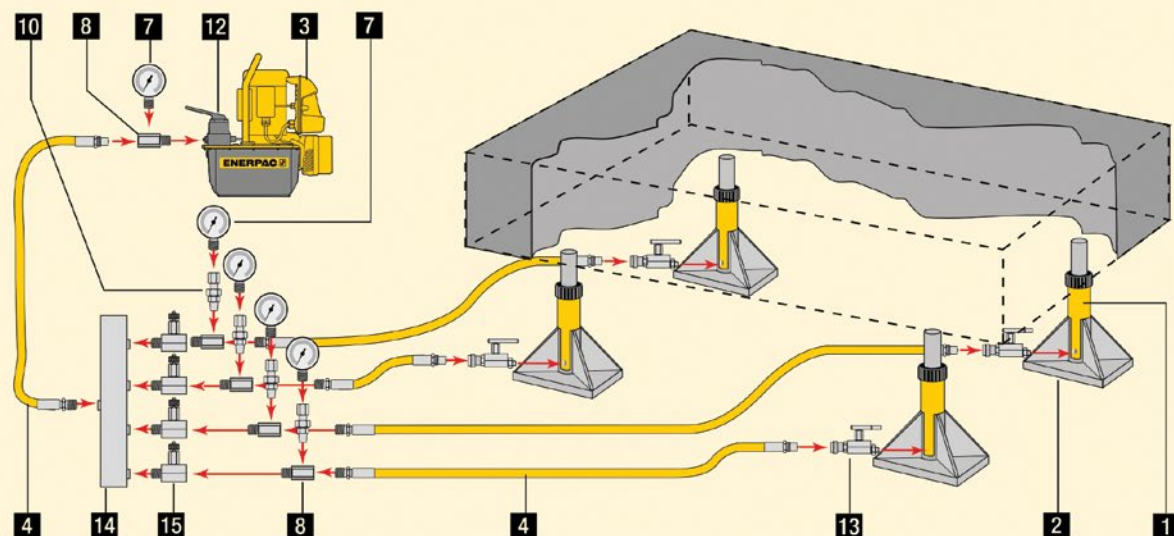
14 Manifold
Allows distribution of hydraulic fluid from one power source to several cylinders.
Page 120

15 Needle valve
Regulates the flow of hydraulic fluid to or from the cylinders.
Page 130-131

Two point lifting set-up using single-acting cylinders.



Four point lifting set-up, using single-acting cylinders and directional control valves.



www.enerpac.com
Visit our web site to learn more about hydraulics and system set-ups.

Engineers Hire Archive

Date

Project

Items Hired

Date

Project

Items Hired

Date

Project

Items Hired

Date

Project

Items Hired

Date

Project

Items Hired

Date

Project

Items Hired

Engineers Hire Archive

Date

Project

Items Hired

.....

.....

.....

.....

Date

Project

Items Hired

.....

.....

.....

.....

Date

Project

Items Hired

.....

.....

.....

.....

Date

Project

Items Hired

.....

.....

.....

.....

Date

Project

Items Hired

.....

.....

.....

.....

Date

Project

Items Hired

.....

.....

.....

.....

Engineers Hire Archive

Date

Project

Items Hired

Date

Project

Items Hired

Date

Project

Items Hired

Date

Project

Items Hired

Date

Project

Items Hired

Date

Project

Items Hired

Engineers Hire Archive

Date

Project

Items Hired

.....

.....

.....

.....

Date

Project

Items Hired

.....

.....

.....

.....

Date

Project

Items Hired

.....

.....

.....

.....

Date

Project

Items Hired

.....

.....

.....

.....

Date

Project

Items Hired

.....

.....

.....

.....

Date

Project

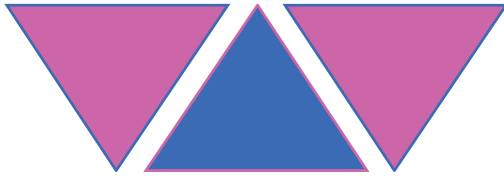
Items Hired

.....

.....

.....

.....



WORLIFTS

HydraHire Division

Specialists in jacking, lifting, supporting and bolting



**National coverage with support for
all products and services**

0121 460 1113

worlifts.co.uk/hire
hire@worlifts.co.uk

Worlifts Limited
Guild House, Sandy Lane, Wildmoor, Bromsgrove B61 0QU